

# A SAFE COMMUNITY IS A SMART COMMUNITY



Presented by Mike O'Boyle



SMARTER, SAFER,  
& HEALTHIER COMMUNITIES





According to the UN, just **over half of the world's people live in urban areas**; it is projected that **two-thirds** of the global population will be **city dwellers by 2050**, amounting to an **urban influx of 2.5 billion** people in the next few decades.





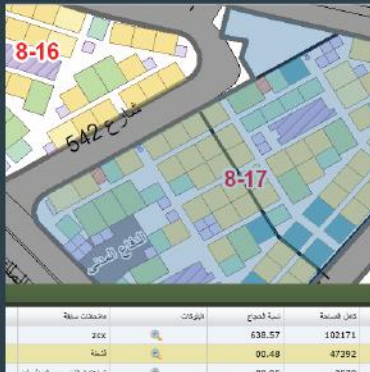
A smarter community is  
**SUSTAINABLE**, and requires us to  
**MONITOR** and **DESIGN**.



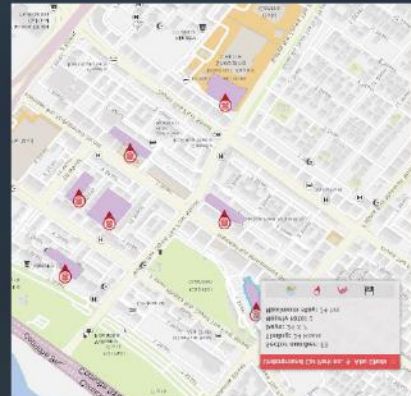


# SMARTER COMMUNITIES

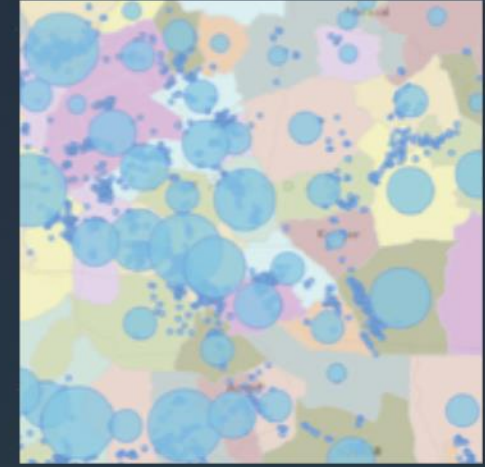
## Monitor & Planning



Housing Management



Multi-Modal Transportation



Water Resources



Urban Design

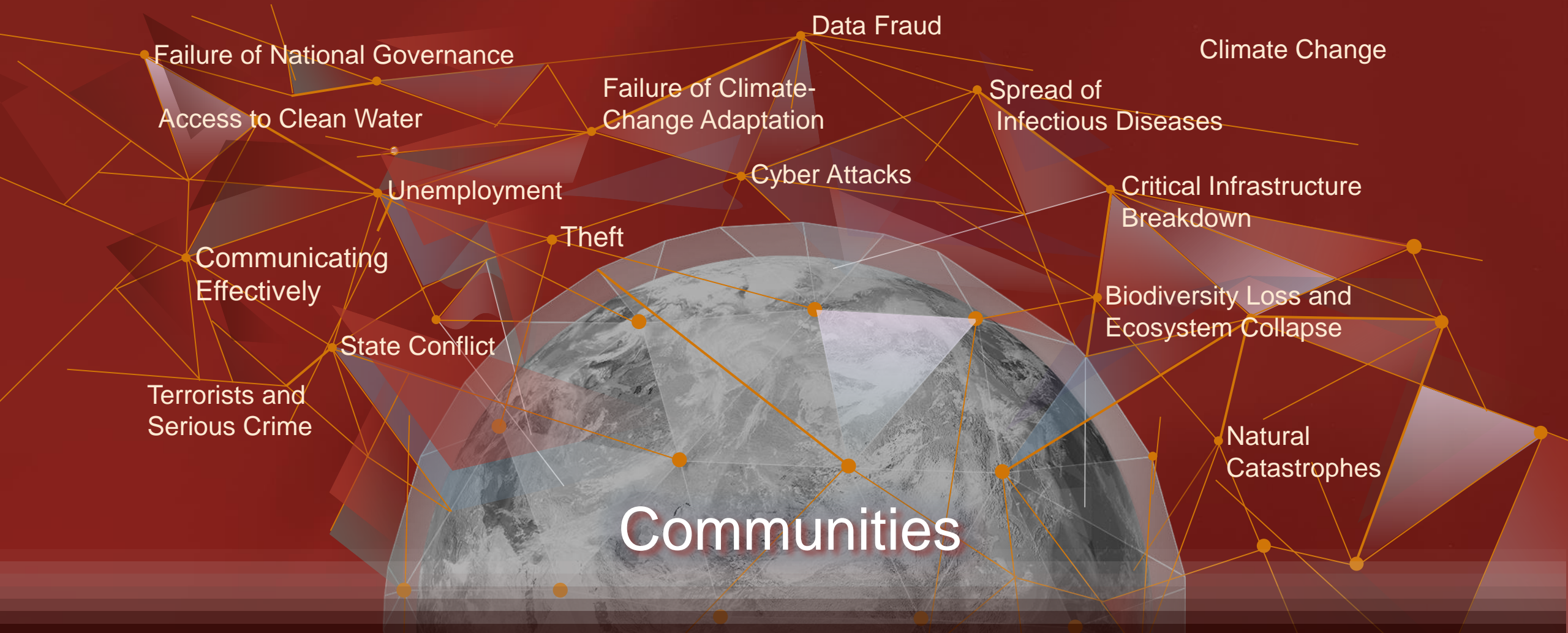




COMMUNITIES SPAN  
MANY SCALES



# Our world faces **MANY THREATS**





# GIS is helping us be **SMARTER, SAFER, & HEALTHIER**





# New Security Challenges

Multi-Jurisdiction, Multi-Agency Missions Affecting Everybody

Immigration Control

Cyber Warfare

Natural Disasters

Border Security

Terrorism

Political Crisis

Energy Security

Organized Crime

Adversaries

*We Need Integrated Approaches . . .*

*. . . Enabling Better Understanding*





A safer community is  
**RESILIENT**, and requires us to  
**PREPARE** and **RESPOND**.





# What Is A Safe Community?

...one in which all sectors of the community work together in a coordinated and collaborative way, forming partnerships to promote safety, manage risk, increase the overall safety of all its members and reduce the fear of harm. ***The key feature is the creation of an infrastructure to combine their resources and interests.***



Australian Safe Communities Foundation

<http://www.safecommunities.net.au/index.php/becoming-a-safe-community>



# What Does A Safe Community Mean To You?

What is important to your community?

*What are your needs?*

Can your community respond to health threats such as epidemics?

Are you prepared to deal with an environmental or technological disaster?

Can you protect your citizens gathered together for a major event?

Can you manage civil unrest and execute modern crime control strategies?

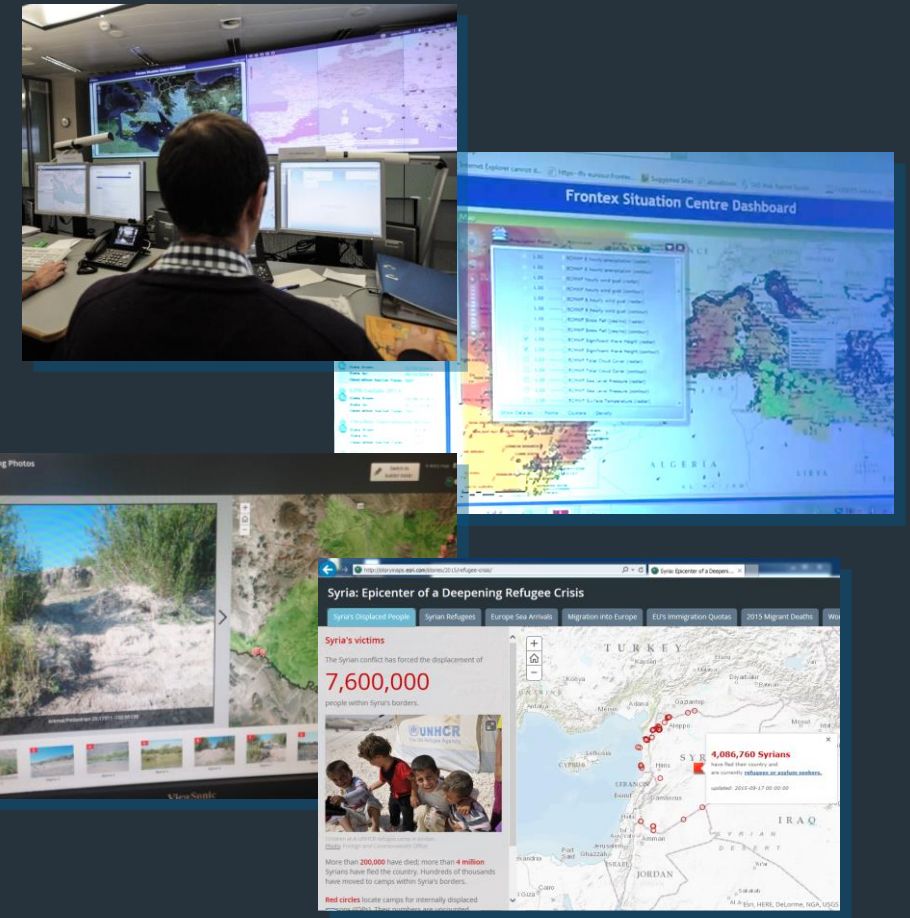
Can you manage emergencies or an intentional attack?

Can you protect critical infrastructure (both physical and virtual)?

As applicable, can you secure your borders and manage refugees or migrants?



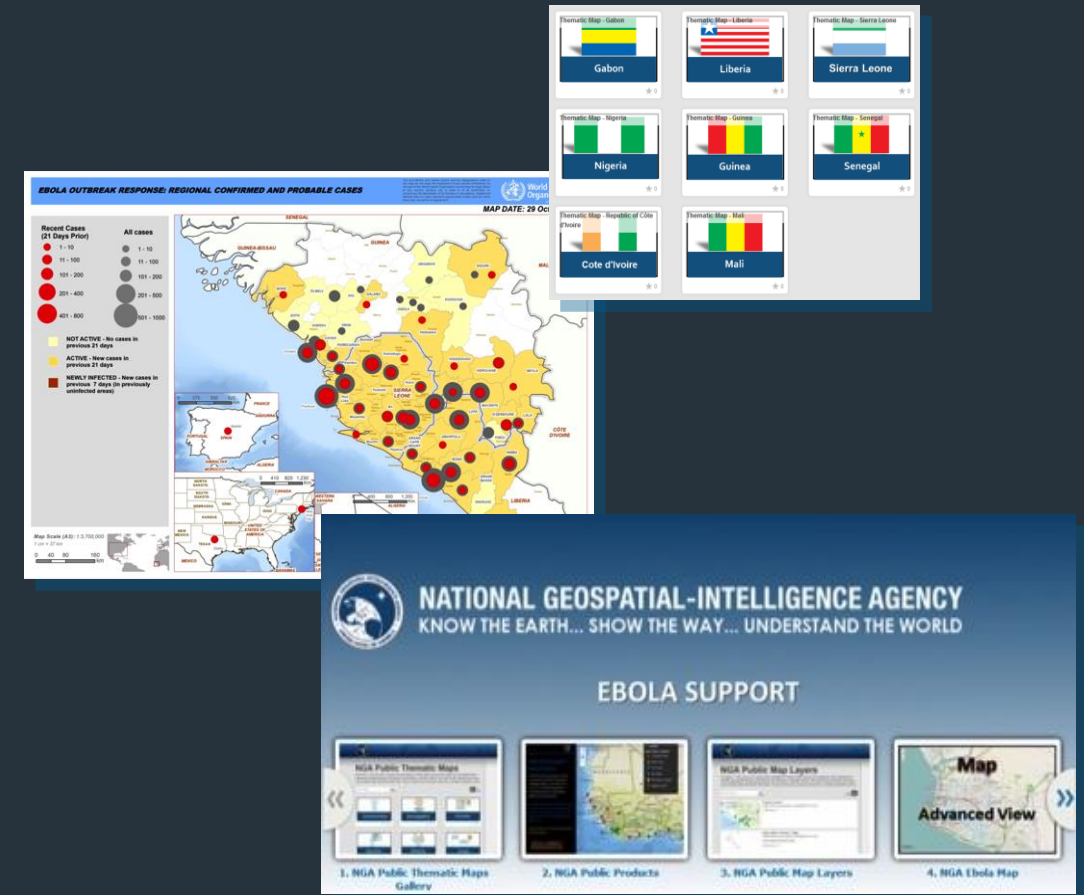
# Can you secure your borders and manage migrants?



Frontex Operations Center  
Dashboard, Story Maps



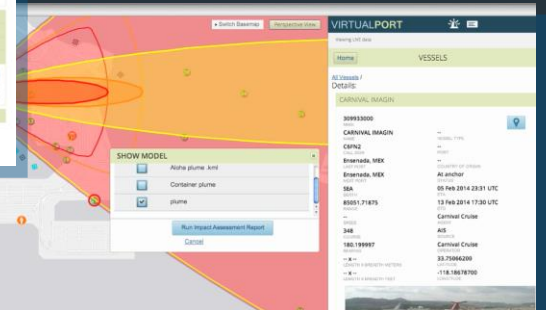
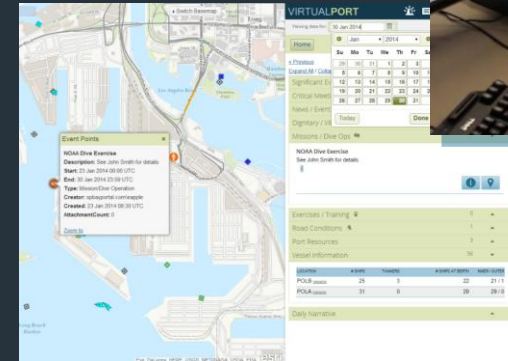
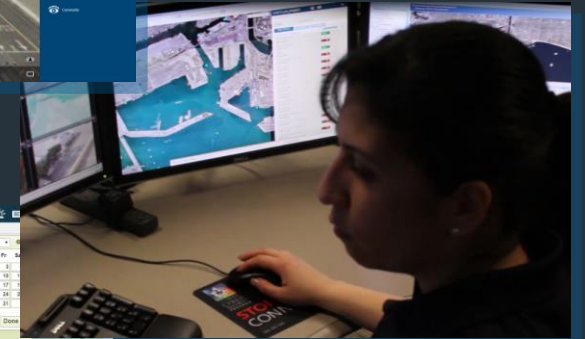
# Is your community safe against health threats such as epidemics?



NGA Integrated International Community  
Dashboard, Story Maps



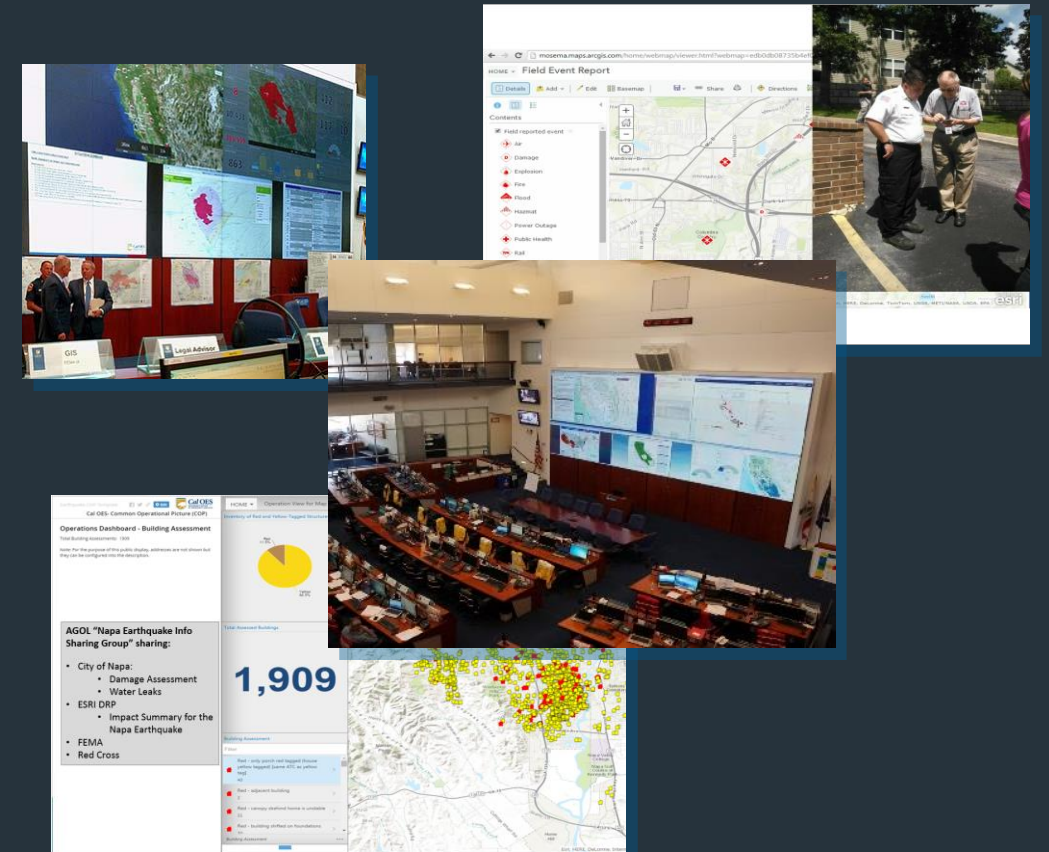
**Can you protect your critical Infrastructure?**



## Port of Long Beach Operations Center Dashboard



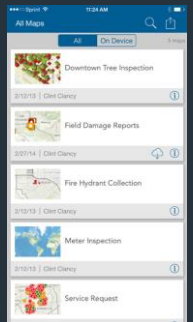
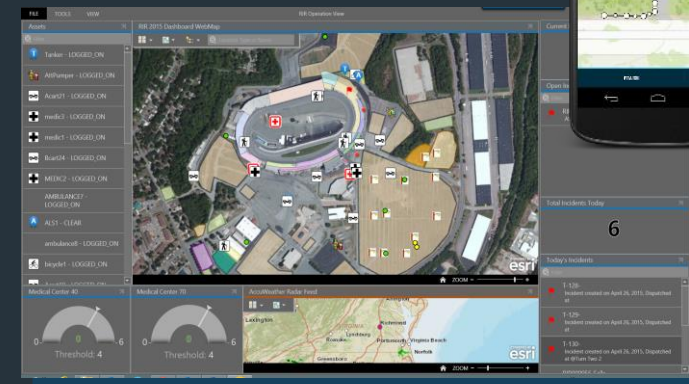
# Are you ready to deal with environmental or technological disaster?



California Office of Emergency Services Operations Center  
Collector, Dashboard, Story Maps



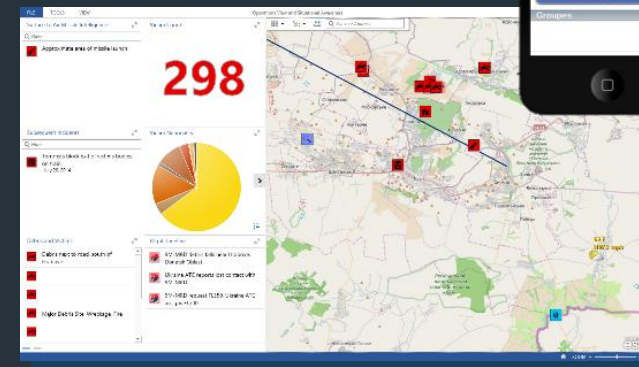
# Can you protect your citizens when gathered together?



**Boston Marathon Operations Center**  
Collector, Dashboard



# Can you cope with an attack on your community?



**MH17 Shoot-down Temporary Operations Center**  
Collector, Dashboard, Story Maps



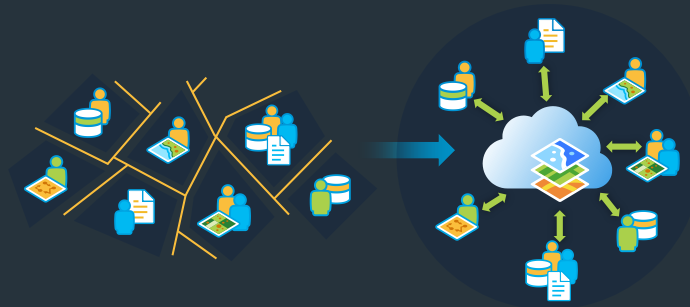
## The Problem:

*Sharing static and dynamic data across agencies and organizations for shared situational awareness*

*Integrating and analyzing data into understandable and actionable information*

*Deploying mission based applications and viewers to support National Security requirements and decisions*

*Disseminating information to multiple devices when and where needed for coordinated actions*





# Geography

The Integrating Science  
of Our World

Providing Content and Context  
for Understanding Everything

... Helping Address  
Our Global Challenges





# Web GIS Is a Transformational Architecture

Opening, Integrating and Simplifying Everything

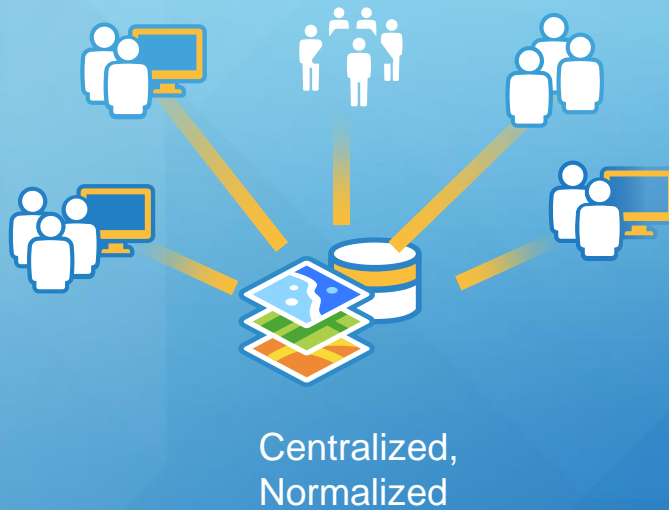




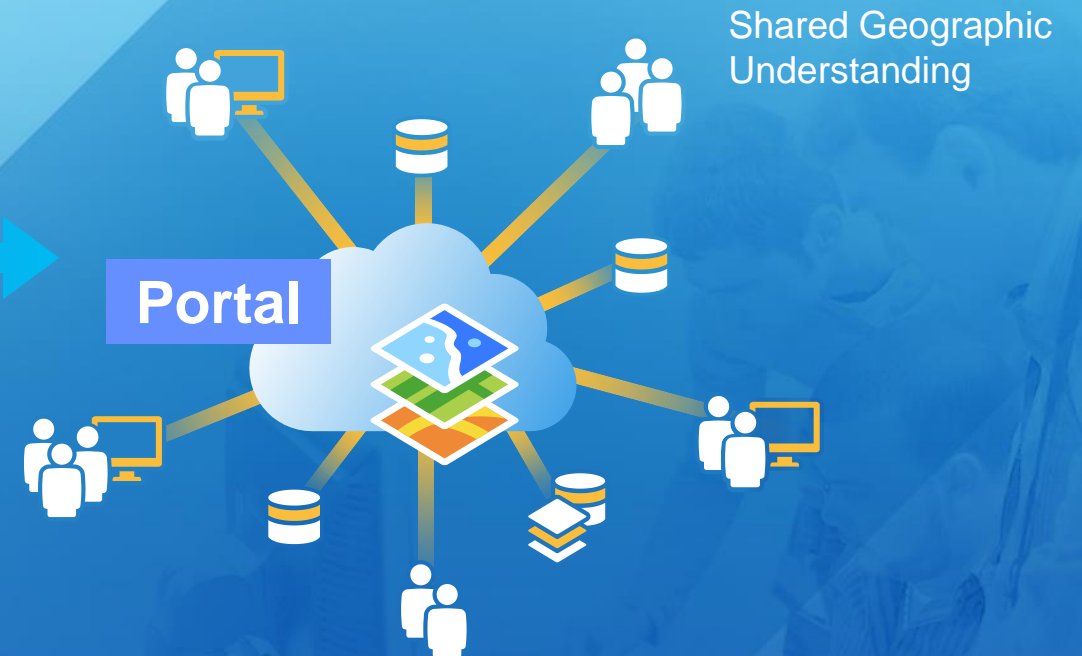
# Web GIS Is a Transformational Architecture

Creating Shared Information and Facilitating Collaboration

**Data Base Centric**



**Networked**





# Web GIS Creates New Connections Across Organizations

Providing a secure Platform for Collaboration

GIS Hub



*Leveraging the Value of Shared Data*

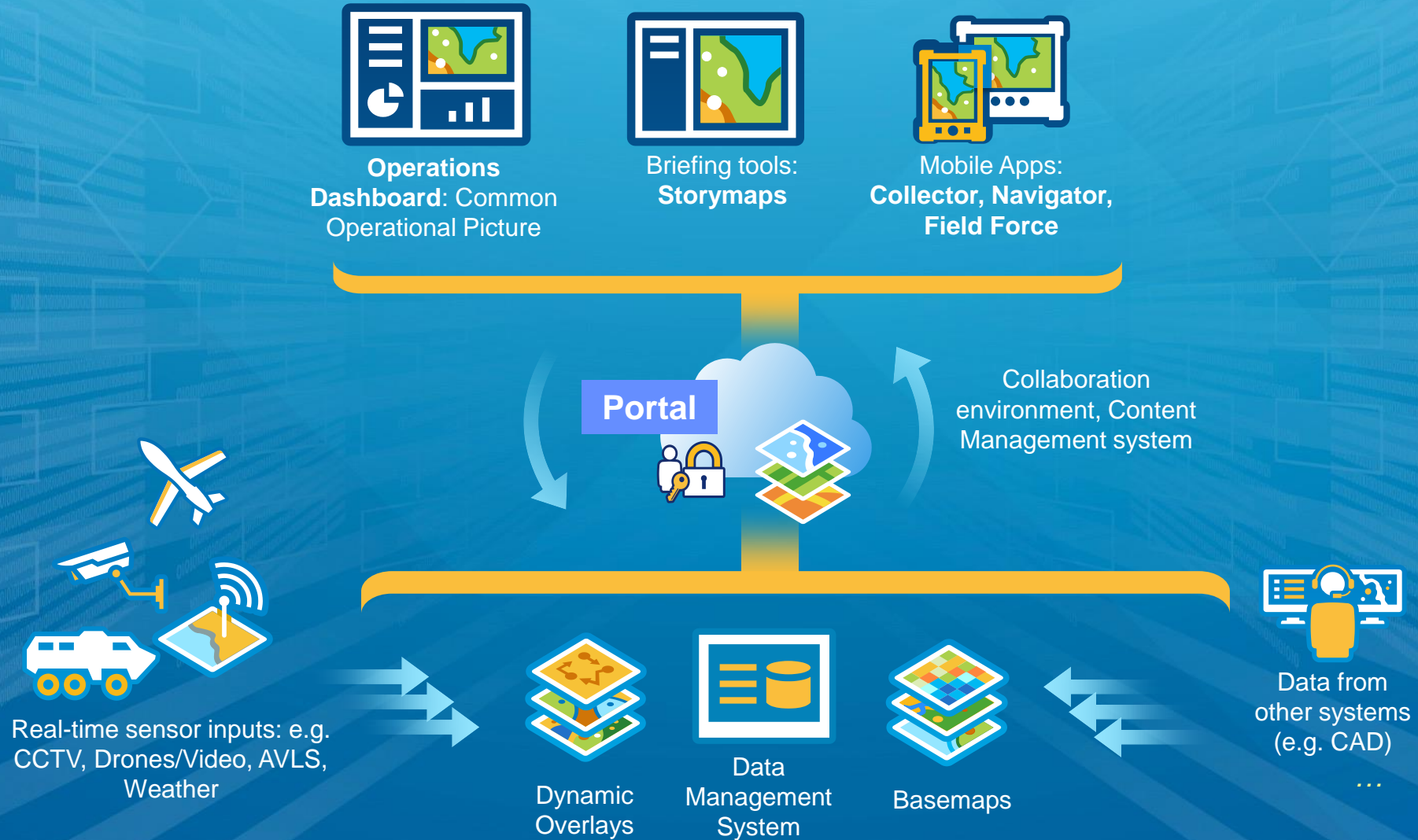


# Who benefits?



# What do you get?

Essential capabilities, delivered right away





# What can you do?

Integrate & Exploit Existing Investments in data & Infrastructure



# WebGIS - Enabling Unity Across The Community

Essential Component of the IT Infrastructure



*Web GIS ... A New Pattern for Security Spatial Data Infrastructure*



# GIS: One Platform ► Many Missions

## What Does A Safe Community Mean To You?

What is important to your community?

*What are your needs?*

Can your community respond to health threats such as epidemics?

Are you prepared to deal with an environmental or technological disaster?

Can you protect your citizens gathered together for a major event?

Can you manage civil unrest and execute modern crime control strategies?

Can you manage emergencies or an intentional attack?

Can you protect critical infrastructure (both physical and virtual)?

As applicable, can you secure your borders and manage refugees or migrants?

# GIS Infrastructure is critical

A platform for secure collaboration

Model and visualize, dynamically and in real-time

Shared situational awareness

Anywhere, anytime, any device







Understanding our world.